

ASLANOGLOU 6

PIREUS

ASLANOGLOU 6

LUXURY APARTMENTS



Chormovitou 242, Pireus, Attica, 18546
Χορμοβίτου 242, Πειραιάς, Αττική, 18546



computer generated image



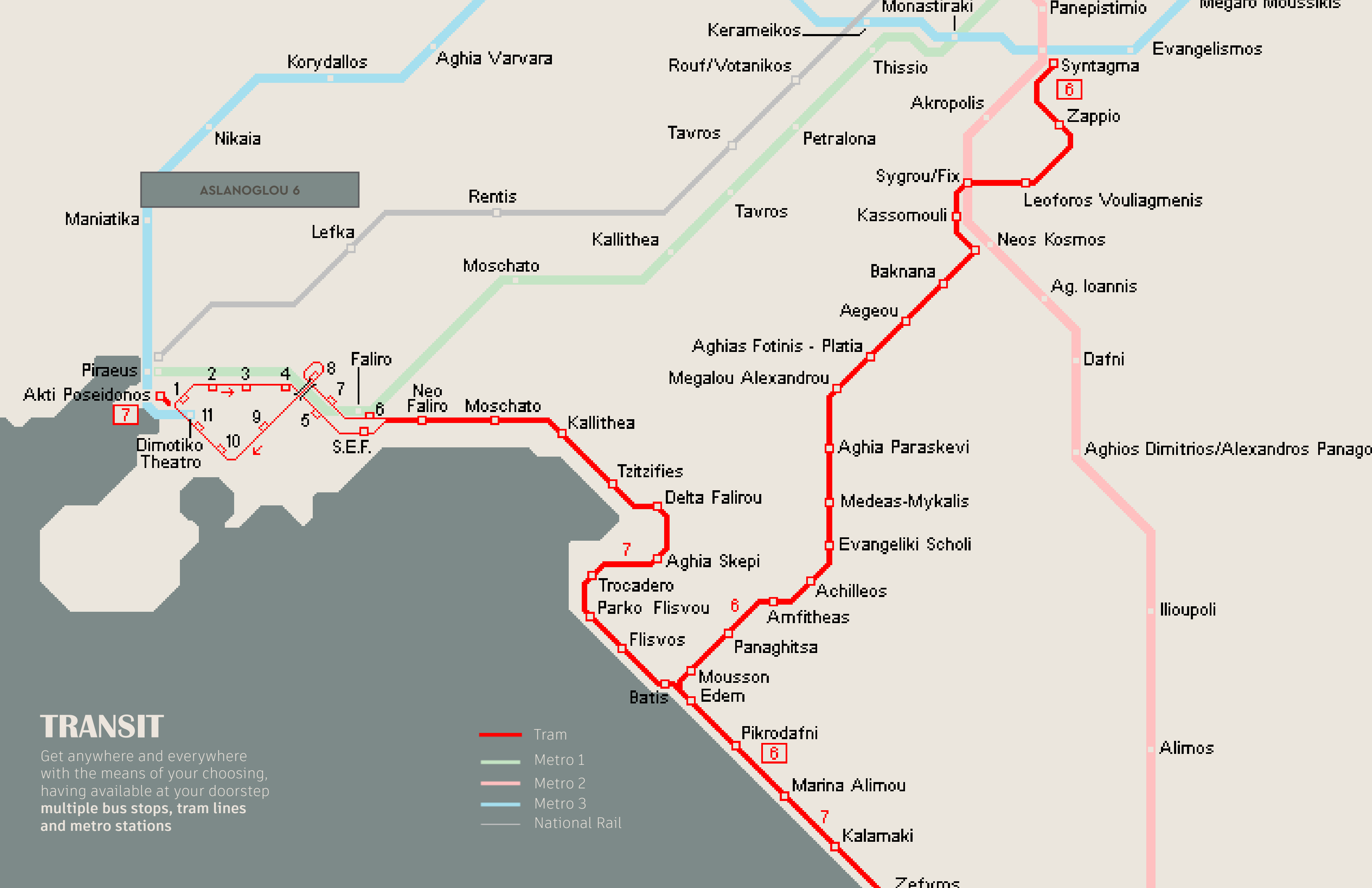
Τα έπιπλα και τα χρώματα στις φωτορεαλιστικές απεικονίσεις είναι ενδεικτικά
Colors and furnishings in photorealistic illustrations are indicative



ASLANOGLOU 6

points of interest

Municipal Theater of Piraeus / Δημοτικό Θέατρο Πειραιά
Georgios Karaiskakis Football Stadium / Στάδιο 'Γεώργιος Καραϊσκάκης'
Archaeological Museum of Piraeus / Αρχαιολογικό Μουσείο Πειραιά
Peace and Friendship Stadium / Στάδιο Ειρήνης και Φιλίας
Piraeus Harbour / Λιμάνι Πειραιά
Mikrolimano / Μικρολίμανο
Lipasmata Multifunctional Park / Πολυχώρος Λιπασμάτων
Holy Trinity / Αγία Τριάδα
Metro/ Tram/ Bus Stations / Στάσεις Μετρό/ Τραμ/ Λεωφορείων



TRANSIT

Get anywhere and everywhere with the means of your choosing, having available at your doorstep multiple bus stops, tram lines and metro stations

- Tram
- Metro 1
- Metro 2
- Metro 3
- National Rail

PIRAEUS HARBOUR

Connect to **anywhere** in the Aegean and explore everything it has to offer by **easy access** to one of Europe's biggest and most lively harbours



MUNICIPAL THEATER OF PIRAEUS

In the heart of Piraeus, the most beautiful theatre of Attica, offers **multiple cultural experiences** at your doorstep



MIKROLIMANO

Explore the **most picturesque natural harbor** of Piraeus, amongst boats and many choices to dine and have fun



LIPASMATA MULTIFUNCTIONAL PARK

Indulge in a variety of activities in this **reclaimed industrial space**, designed as a **contemporary multifunctional park** and given back to the residents



BASEMENT



Floor		Basement	
Type		Storages	
Units		STORAGES	
Unit	ST1	Unit	ST9
Covered Area (m²)	6.17	Covered Area (m²)	5.93
Unit	ST2	Unit	ST10
Covered Area (m²)	7.67	Covered Area (m²)	4.34
Unit	ST3	Unit	ST11
Covered Area (m²)	10.38	Covered Area (m²)	4.65
Unit	ST4	Unit	ST12
Covered Area (m²)	8.00	Covered Area (m²)	4.65
Unit	ST5	Unit	ST13
Covered Area (m²)	8.00	Covered Area (m²)	4.65
Unit	ST6	Unit	ST14
Covered Area (m²)	8.00	Covered Area (m²)	4.65
Unit	ST7	Unit	ST15
Covered Area (m²)	8.00	Covered Area (m²)	7.01
Unit	ST8	Unit	ST16
Covered Area (m²)	8.73	Covered Area (m²)	5.81
Unit	ST17		
Covered Area (m²)	5.81		

Please note: All the above are subject to verification following completion. Purchasers must, therefore, rely on their own inspection to verify any information provided. All dimensions are within + or -5%.

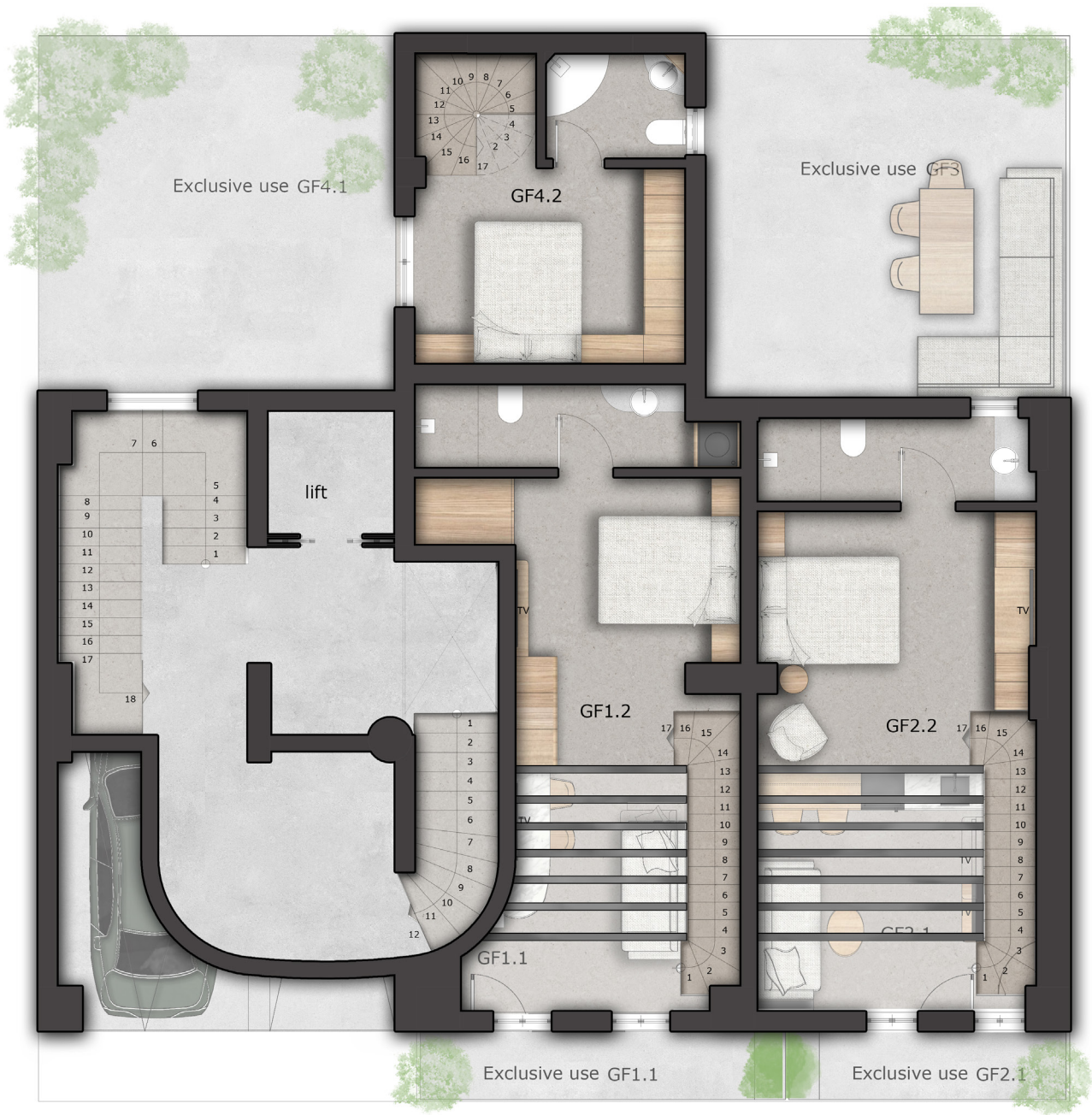
GROUND FLOOR



Floor	Groundfloor
Type	Lofts/Apartment
Bed/Bath	1 Bed / 1 Bath
Unit	GF1.1 (&GF1.2)
Covered Area (m²)	40,77
Balconies (m²)	5,16
Total Main Use(m²)	51,09
Unit	GF2.1 (&GF2.2)
Covered Area (m²)	40,67
Balconies (m²)	3,94
Total Main Use(m²)	44,61
Unit	GF3
Covered Area (m²)	40,00
Balconies (m²)	25,85
Total Main Use(m²)	65,85
Unit	GF4.1 (&GF4.2)
Covered Area (m²)	40,60
Balconies (m²)	24,80
Total Main Use(m²)	65,40

Please note: All the above are subject to verification following completion. Purchasers must, therefore, rely on their own inspection to verify any information provided. All dimensions are within + or -5%.

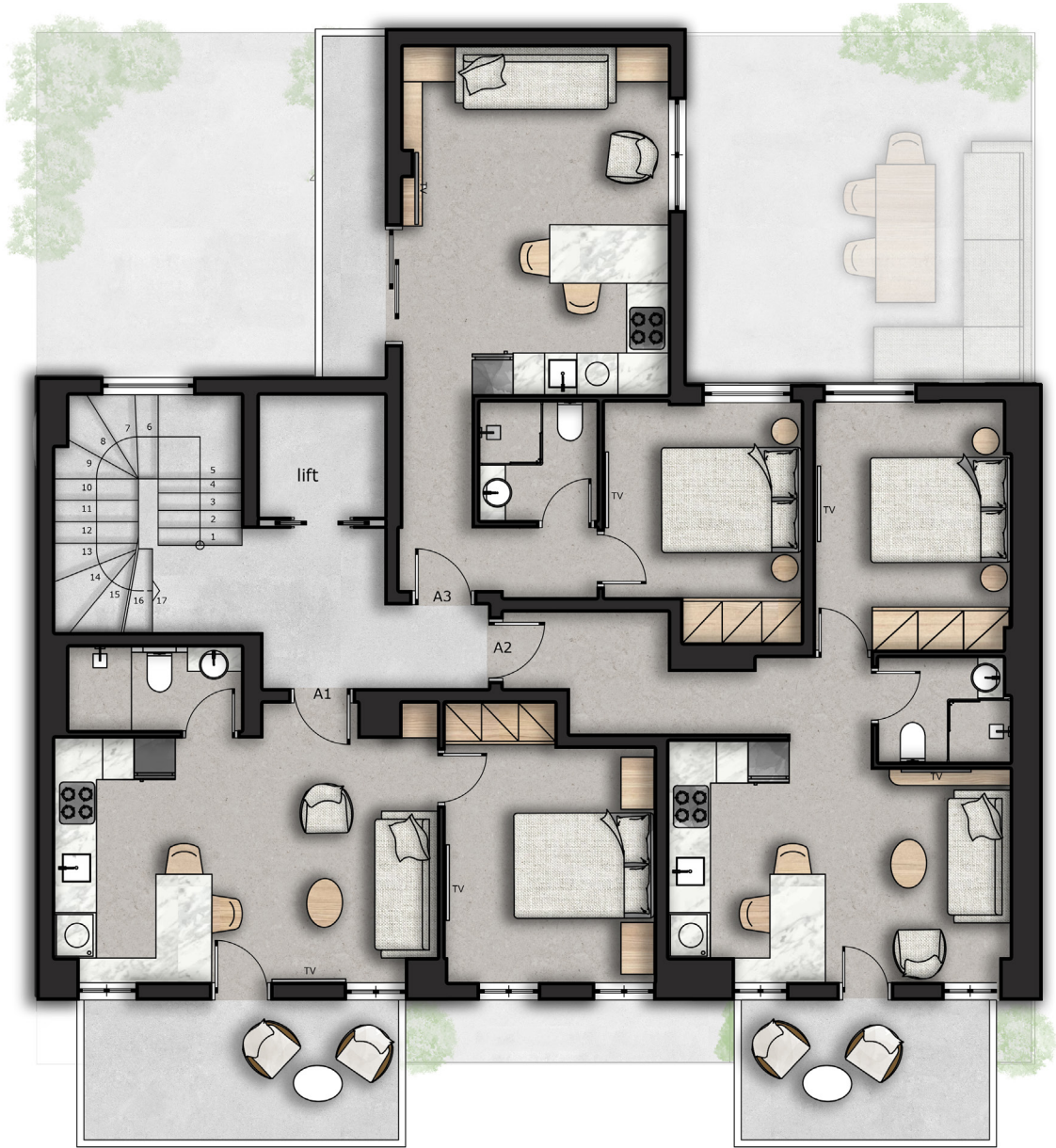
MEZZANINE



Floor	Mezzanine
Type	Lofts
Bed/Bath	1 Bed / 1 Bath
Unit	GF1.1 (&GF1.2)
Covered Area (m²)	40,77
Balconies (m²)	5,16
Total Main Use(m²)	51,09
Unit	GF2.1 (&GF2.2)
Covered Area (m²)	40,67
Balconies (m²)	3,94
Total Main Use(m²)	44,61
Unit	GF3
Covered Area (m²)	40,00
Balconies (m²)	25,85
Total Main Use(m²)	65,85
Unit	GF4.1 (&GF4.2)
Covered Area (m²)	40,60
Balconies (m²)	24,80
Total Main Use(m²)	65,40

Please note: All the above are subject to verification following completion. Purchasers must, therefore, rely on their own inspection to verify any information provided. All dimensions are within + or -5%.

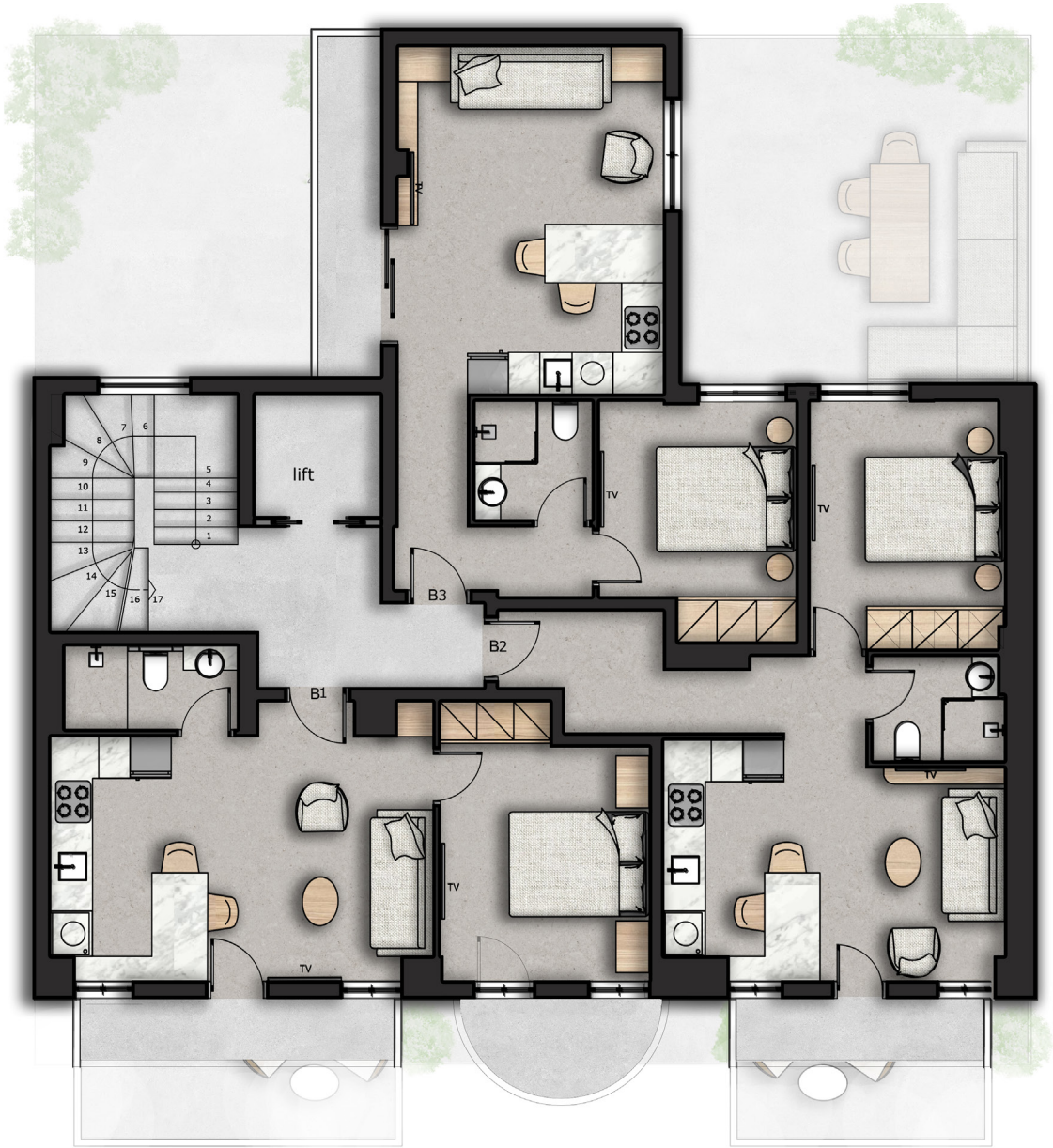
1ST FLOOR



Floor	1 st Floor
Type	Apartments
Bed/Bath	1 Bed / 1 Bath
Unit	A1
Covered Area (m²)	42.04
Balconies (m²)	9.87
Total Area(m²)	51.91
Unit	A2
Covered Area (m²)	45.04
Balconies (m²)	7.88
Total Area(m²)	52.92
Unit	A3
Covered Area (m²)	43.32
Balconies (m²)	4.98
Total Area(m²)	48.30

Please note: All the above are subject to verification following completion. Purchasers must, therefore, rely on their own inspection to verify any information provided. All dimensions are within + or -5%.

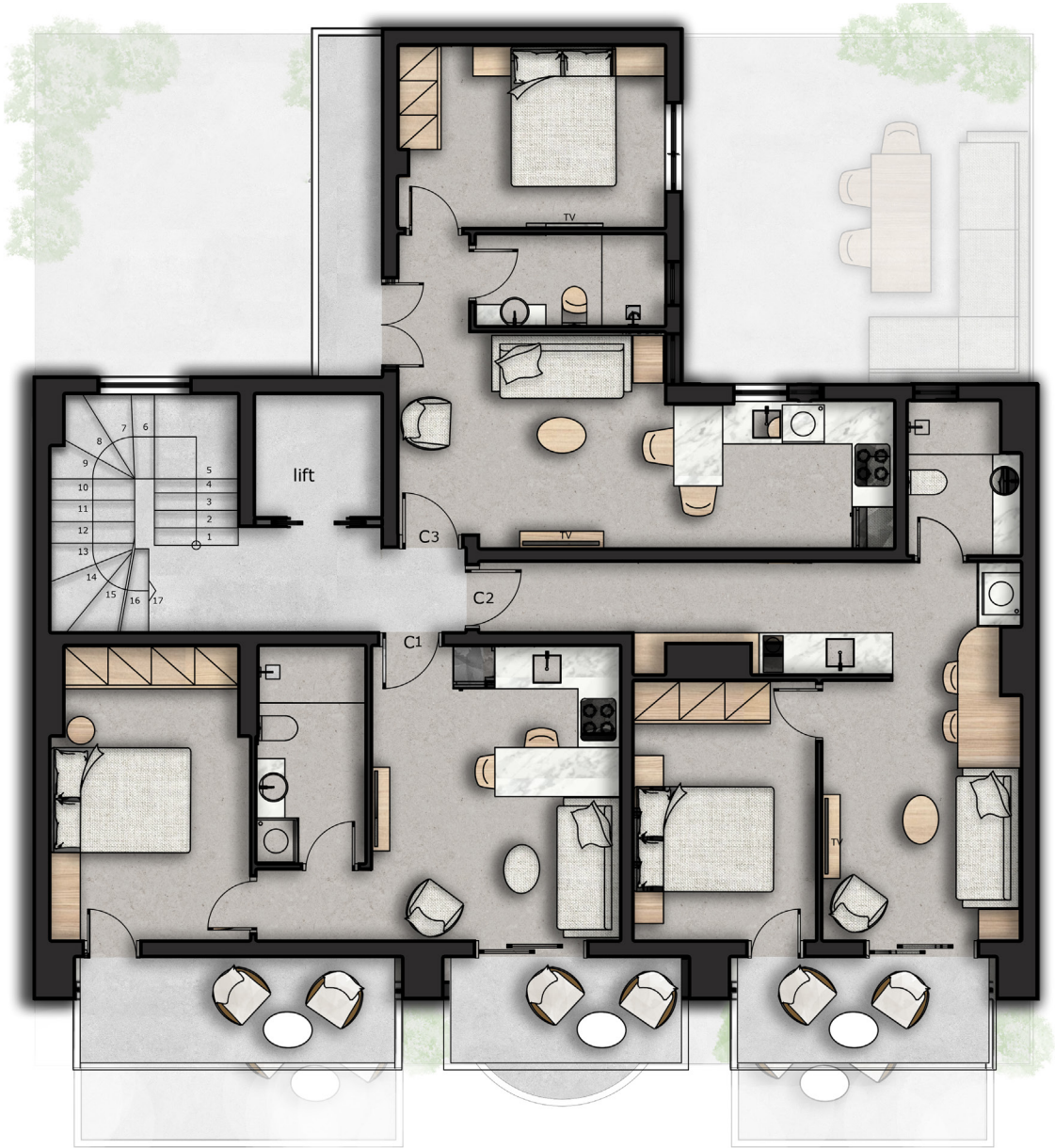
2ND FLOOR



Floor	2 nd Floor
Type	Apartments
Bed/Bath	1 Bed / 1 Bath
Unit	B1
Covered Area (m²)	42.04
Balconies (m²)	8.47
Total Area(m²)	50.51
Unit	B2
Covered Area (m²)	45.04
Balconies (m²)	3,75
Total Area(m²)	48.79
Unit	B3
Covered Area (m²)	43.32
Balconies (m²)	4.98
Total Area(m²)	48.30

Please note: All the above are subject to verification following completion. Purchasers must, therefore, rely on their own inspection to verify any information provided. All dimensions are within + or -5%.

3RD FLOOR



Floor	3 rd Floor
Type	Apartments
Bed/Bath	1 Bed / 1 Bath
Unit	C1
Covered Area (m²)	40.09
Balconies (m²)	13.10
Total Area(m²)	53.19
Unit	C2
Covered Area (m²)	42.17
Balconies (m²)	6.08
Total Area(m²)	48.25
Unit	C3
Covered Area (m²)	41.25
Balconies (m²)	4.98
Total Area(m²)	46.23

Please note: All the above are subject to verification following completion. Purchasers must, therefore, rely on their own inspection to verify any information provided. All dimensions are within + or -5%.

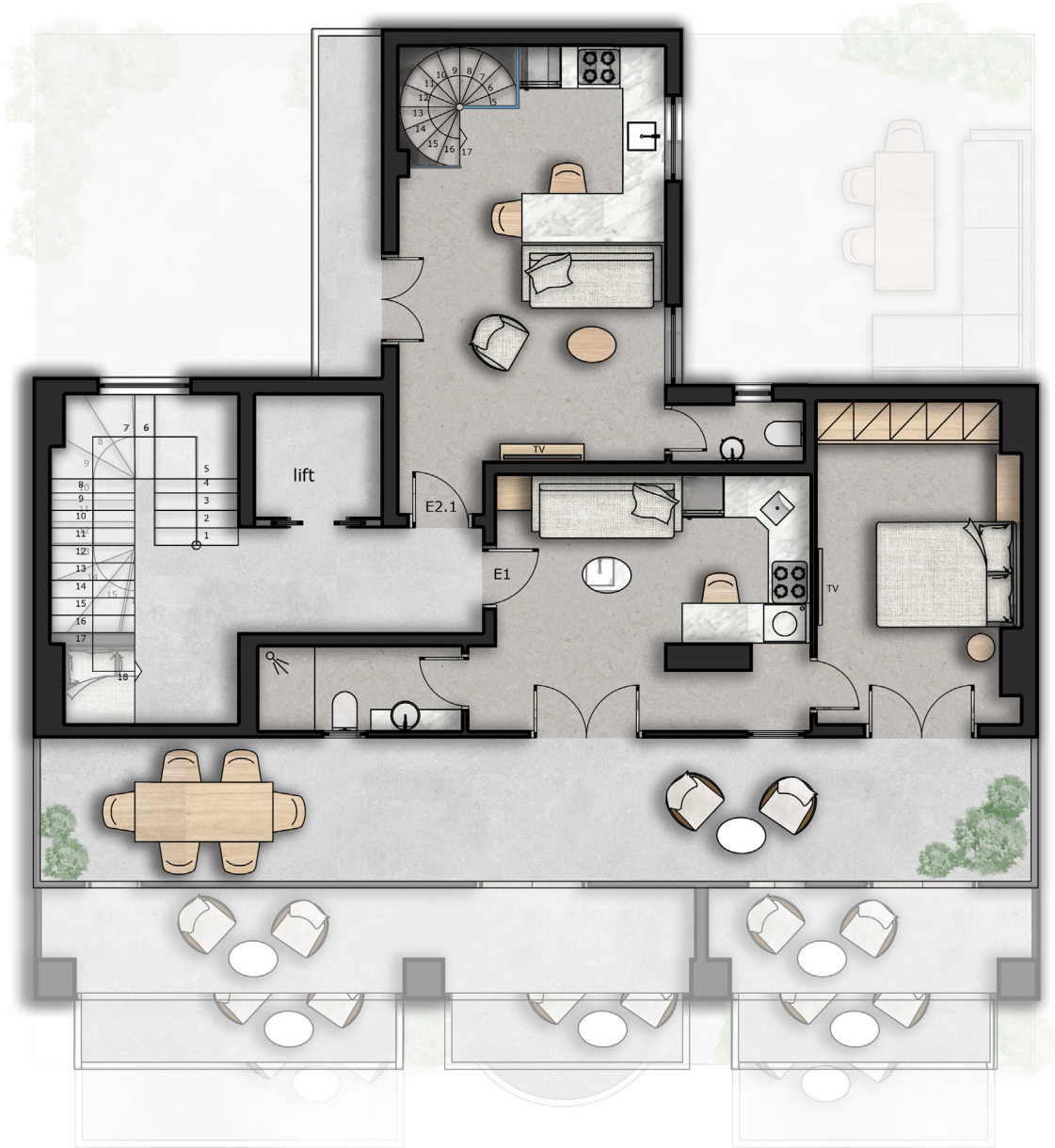
4TH FLOOR



Floor	4 th Floor
Type	Apartments
Unit	D1
Bed/Bath	1 Bed / 1 Bath
Covered Area (m²)	40.05
Balconies (m²)	15.47
Total Area(m²)	55.22
Unit	D2
Bed/Bath	1 Bed / 1 Bath
Covered Area (m²)	45.27
Balconies (m²)	7.52
Total Area(m²)	52.79
Unit	D3 & E2
Bed/Bath	1 Bed / 1 Bath / 1 WC
Covered Area (m²)	53.73
Balconies (m²)	9.96
Total Area(m²)	63.69

Please note: All the above are subject to verification following completion. Purchasers must, therefore, rely on their own inspection to verify any information provided. All dimensions are within + or -5%.

5TH FLOOR



Floor	55 th Floor
Type	Apartments

Unit	E1
Bed/Bath	1 Bed / 1 Bath
Covered Area (m²)	41.13
Balconies (m²)	30.90
Total Area(m²)	55.22

Unit	D3 & E2
Bed/Bath	1 Bed / 1 Bath / 1 WC
Covered Area (m²)	53.73
Balconies (m²)	9.96
Total Area(m²)	72.03

Please note: All the above are subject to verification following completion. Purchasers must, therefore, rely on their own inspection to verify any information provided. All dimensions are within + or -5%.





computer generated image

Τα έπιπλα και τα χρώματα στις φωτορεαλιστικές απεικονίσεις είναι ενδεικτικά
Colors and furnishings in photorealistic illustrations are indicative



computer generated image

Τα επίπλα και τα χρώματα στις φωτορεαλιστικές απεικονίσεις είναι ενδεικτικά
Colors and furnishings in photorealistic illustrations are indicative





computer generated image

Τα έπιπλα και τα χρώματα στις φωτορεαλιστικές απεικονίσεις είναι ενδεικτικά
Colors and furnishings in photorealistic illustrations are indicative



Τα έπιπλα και τα χρώματα στις φωτορεαλιστικές απεικονίσεις είναι ενδεικτικά
Colors and furnishings in photorealistic illustrations are indicative





computer generated image

Τα έπιπλα και τα χρώματα στις φωτορεαλιστικές απεικονίσεις είναι ενδεικτικά
Colors and furnishings in photorealistic illustrations are indicative



computer generated image

Τα έπιπλα και τα χρώματα στις φωτορεαλιστικές απεικονίσεις είναι ενδεικτικά
Colors and furnishings in photorealistic illustrations are indicative





Τα έπιπλα και τα χρώματα στις φωτορεαλιστικές απεικονίσεις είναι ενδεικτικά
Colors and furnishings in photorealistic illustrations are indicative

AREA SCHEDULE

ASLANOGLU 6

Floor	Unit no.	Type	Bed-Bath-WC	Covered area net (sqm)	Balcony (sqm)	Garden	Parking(P,sqm)	Total area (sqm)
Basement	St 1	Storage		6,27				
Basement	St 2	Storage		7,67				
Basement	St 3	Storage		10,38				
Basement	St 4	Storage		8,00				
Basement	St 5	Storage		8,00				
Basement	St 6	Storage		8,00				
Basement	St 7	Storage		8,00				
Basement	St 8	Storage		7,93				
Basement	St 9	Storage		5,93				
Basement	St 10	Storage		4,34				
Basement	St 11	Storage		4,65				
Basement	St 12	Storage		4,65				
Basement	St 13	Storage		4,65				
Basement	St 14	Storage		4,42				
Basement	St 15	Storage		7,01				
Basement	St 16	Storage		5,81				
Basement	St 17	Storage		5,81				
Groundfloor & Mezzanine	GF1.1 & GF1.2	Loft	1-1	40,77		5,16		45,93
Groundfloor & Mezzanine	GF2.1 & GF2.2	Loft	1-1	40,67		3,94		44,61
Groundfloor	GF3	Apartment	1-1	40,00		25,85		65,85
Groundfloor & Mezzanine	GF4.1 & GF4.2	Loft	1-1	40,60		24,80		65,40

1st Floor	A1	Apartment	1-1	42,04	9,87			51,91
1st Floor	A2	Apartment	1-1	45,04	7,88			52,92
1st Floor	A3	Apartment	1-1	43,32	4,98			48,30
2nd Floor	B1	Apartment	1-1	42,04	8,47			50,51
2nd Floor	B2	Apartment	1-1	45,04	3,75			48,79
2nd Floor	B3	Apartment	1-1	43,32	4,98			48,30
3rd Floor	C1	Apartment	1-1	40,09	13,10			53,19
3rd Floor	C2	Apartment	1-1	42,17	6,08			48,25
3rd Floor	C3	Apartment	1-1	41,25	4,98			46,23
4th Floor	D1	Apartment	1-1	40,05	15,47			55,52
4th Floor	D2	Apartment	1-1	45,27	7,52			52,79
4th & 5th Floor	D3 & E2	Loft	1-1-1	53,73	9,96			63,69
5th Floor	E1	Apartment	1-1	41,13	30,90			72,03



CONTACT

Capital Land Development SA

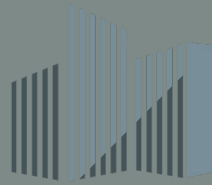
164 Kifisias Ave, Neo Psychiko, 115 25 Athens,Greece
t: + 30 210 32 41 091
e: info@cldevelop.com



Disclaimer: In the event of any contradiction or discrepancy between the document and brochure, or in the event of any ambiguity in the interpretation of the property information, the developer reserves the right in its absolute discretion. The information in this document is indicative only. We can only show a general impression of the range and quality of properties available. The document does not constitute a contract or warranty. Therefore kindly view the artist's impression, layouts and plans, specification and floor plans as guidance only and appreciate that development progresses changes may be necessary. The developer also reserves the right to make such changes from time to time without notice.

ASLANOGLOU 6

LUXURY APARTMENTS



Capital Land Development SA

CLD

Chormovitou 242, Pireus, Attica, 18546

Χορμοβίτου 242, Πειραιάς, Αττική, 18546